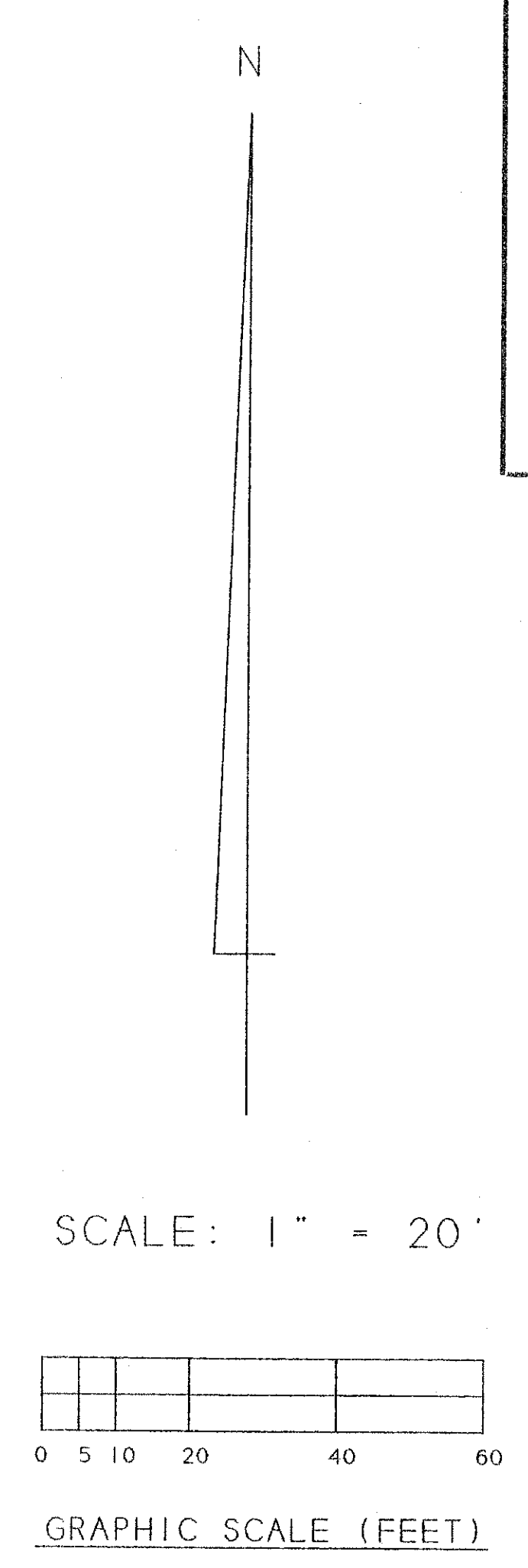
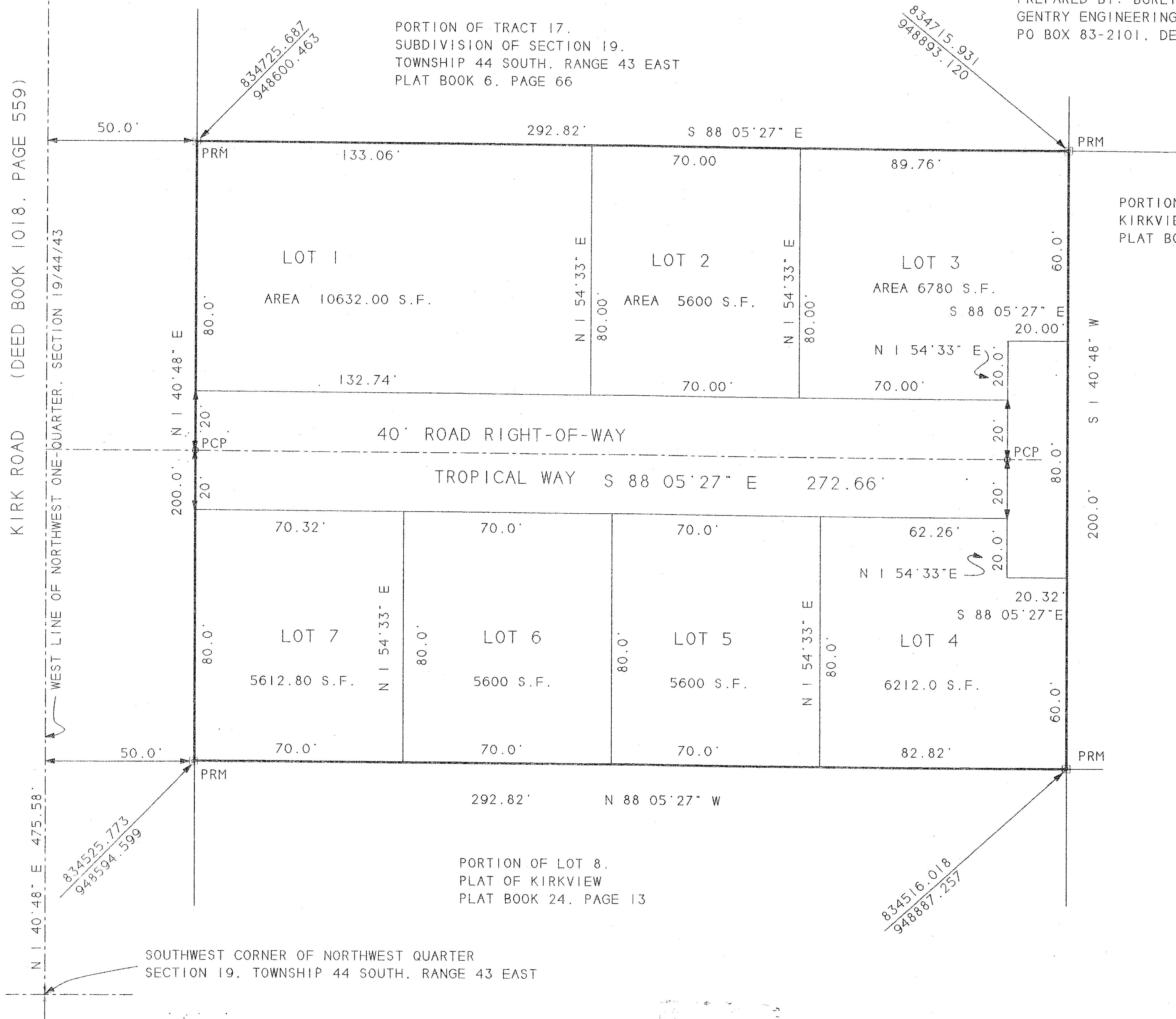


CABRERA SUBDIVISION

REPLAT OF A PORTION OF TRACT 38, FRANK H. SWAN SUBDIVISION
 OF SECTION 19, TOWNSHIP 44 SOUTH, RANGE 43 EAST, P.B. 6, P. 66
 VILLAGE OF PALM SPRINGS, PALM BEACH COUNTY, FLORIDA
 JANUARY 2008
 SHEET 2 OF 2

PREPARED BY: BURLISON A. GENTRY PSM NO. 2580
 GENTRY ENGINEERING AND LAND SURVEYING, INC.
 PO BOX 83-2101, DELRAY BEACH, FLORIDA



- LEGEND:
1. PRM INDICATES PERMANENT REFERENCE MONUMENT
 2. PCP INDICATES PERMANENT CONTROL POINT
 3. BEARINGS ARE REFERENCED TO THE CENTERLINE OF KIRK ROAD BEARING N 1° 40' 48" E, TRUE BEARING. ALL OTHER BEARINGS ARE RELATIVE THERETO.
 4. THE COORDINATES AT PLAT CORNERS ARE TIED TO 1983 (1990), STATE PLANE COORDINATES, FLORIDA EAST ZONE